

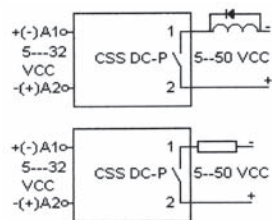
IRC series
CSS-DCP
4-pin, Interface solid state relay, 1-pole, plug-in faston

Type	CSS-DCP PNP solid state relay For switching inductive ohmic DC loads Positive common output
Ausgang	1 N/O contact
Operating range	2 A, 5 ... 50 VDC
Minimum contact load	1 mA
Control parameters	
Input voltage range	5 ... 32 VDC
Release voltage	< 2,5 VDC
Input current	3 ± 1 mA
Stabilised current regulator	yes
Input voltage protection	IEC-1000-4-5 Level 1
Output	
Type	PNP
Max. output current	2 A
Output voltage range	5 ... 50 VDC
Max. switch-on current	5 A/ 350µs
Voltage drop	≤ 1,3 VDC
Residual current	< 100 µA/48 VDC
EMC protection	IEC-1000-4-5 Level 1
Inverse current	≤ 1 A
Specifications	
Ambient temperature operation/storage	-25 (no ice)...60 °C / -40 ... 80 °C
Test voltage between input/output	4 kV rms/1 min.
Turn-on delay	1 ms
Release delay	≤ 2 ms
Weight	28 g

Applications

For switching heating elements, electro valves, motors, PLC input/output signals, solenoids, incandescent and fluorescent lamps, etc. (up to 50 VDC).

Inductive loads must be shunted with an antiparallel diode.

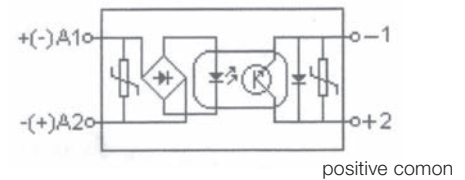


Accessories

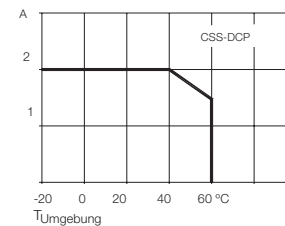
Socket: **S10, S10-M, S10-K, S10-P**



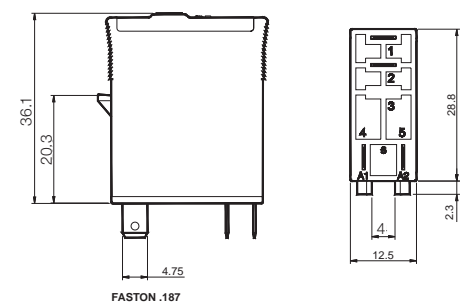
Fig. 1 CSS-DCP diagram



Tab. 2 DC load limit curve



Dimensions [mm]



Technical approvals, conformities





Kühn Controls AG

Notes:

You want more information about this product, please call us: tel: +49 (0)7082-940000 or send us a fax: +49 (0)7082-940001, or email: sales@kuehn-controls.de or visit our Website: www.kuehn-controls.de