

MRC series

S3-B

Socket for 11-pin standard relay according to IEC 67-I-18b

RELECO

Type	S3-B 3-pole, 1 connection level Coding ring optional Integrated retaining clip and labelling space
-------------	--

Rated current	10 A
----------------------	-------------

Specifications

Rated load	10 A/250V
Insulation	Test voltage V rms 1 min
All terminals/DIN rail	2,5 kV
- Terminal/terminal	2,5 kV
- Cross-section of connecting wire	
Cross-section of connecting wire	
- Single-wire	4 mm ² or 2 x 2,5 mm ²
- Multi-wire	22 - 14 AWG
Max. screw torque	1,2 Nm
Screw dimensions	M3, Pozi, slot
Integrated retaining clip/plastic	for relay series C3
Labelling space	detachable
Connection label	1 bis 8; DIN/EN
Mounting	DIN rail T35 or mounting plate
Ambient temperature	40 (no ice)...60 °C / -40 ... 80 °C

Associated, plug-in 11-pin MRC relays

Suitable for holding the Releco coding ring
For coding the relay and the socket.

**C3-A, C3-G, C3-T, C3-X, C3-M, C3-R,
C3-E, C3-N**

Accessories

Coding ring, blue set:

Retaining spring, steel

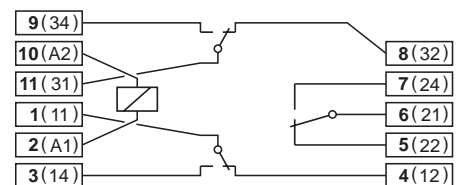
S3-BC

Packaging unit: 5 pcs

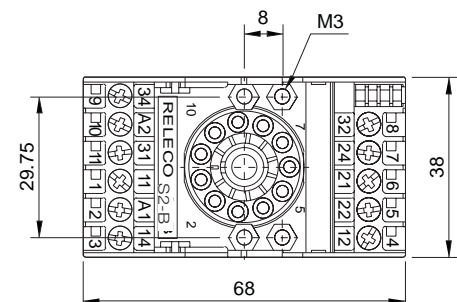
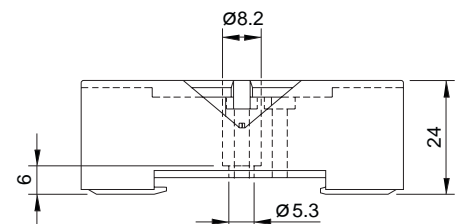
S3-C, S3-CT (with Timecube)



Connection diagram



Dimensions [mm]



Technical approvals, conformities



EN 60947-1, EN 61810-5



Kühn Controls AG

Notes:

You want more information about this product, please call us: tel: +49 (0)7082-940000 or send us a fax: +49 (0)7082-940001, or email: sales@kuehn-controls.de or visit our Website: www.kuehn-controls.de